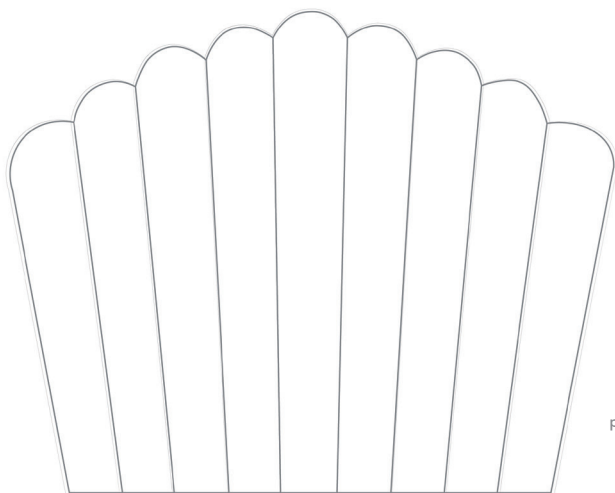


OLIVER BONAS

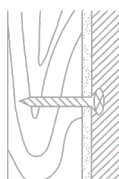
FLORA HEADBOARD



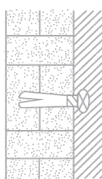
Wall Fixings are not provided.

Wall fixing must be selected according to the type of wall and the weight of item to be hung. We recommend seeking professional advice before selecting fixings.

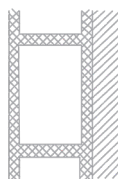
Check the headboard periodically to ensure fittings are secure.



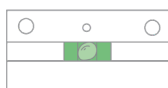
Wood



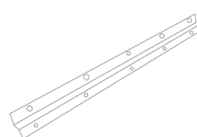
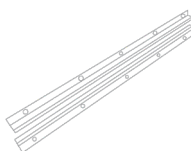
Brick



Cavity
(Special fittings needed)



Ensure the bar is level by checking the built in spirit level. The bubble needs to be in the middle



Five screws are needed to hang the headboard securely.

OLIVER BONAS

Upholstered Furniture Care Information

We hope you love your purchase, however if you aren't completely happy please retain your packaging to ensure its safe return

FRAMES

Hard wood frame.

FABRIC

This range is finished with a high-quality Polyester mix fabric and complies to UK Flammability regulations. It is suitable for domestic use only.

CARING FOR YOUR UPHOLSTERED FURNITURE

To ensure that your upholstered furniture is kept in pristine condition use a lint roller to pick up any fluff or marks that have been left. If you do this regularly, your upholstered product will remain in the best condition.

IMPORTANT

Velvet is inherently sensitive to pressure.

Any marks left after scuffing or compression will come out given time, but this process can be helped along by lightly steaming the affected area.

This is a natural characteristic of this type of fine fabric.

It does not in any way, detract from its wearing ability.

NEVER use water to clean fabric – use a dry cloth to remove surface moisture.

Always dab the affected area, do NOT rub.

It is always advisable to use a specialist upholstery dry cleaner.

For best results with more stubborn stains, use a reputable specialist dry cleaning service.

Dust the wooden legs with furniture polish and a cloth.

Please be careful not to get polish on the fabric as this may cause staining.

Do not drag your upholstery as it may damage the joints and mark your floor.

Avoid sharp objects.

Indoor use only.

Please retain this information for future reference.